

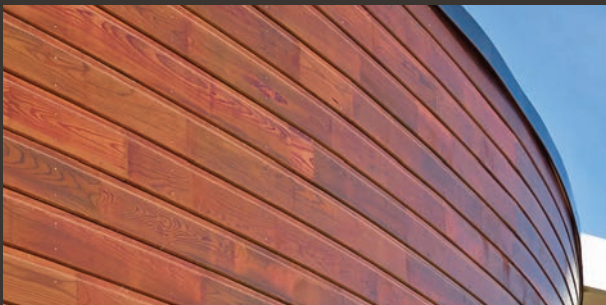
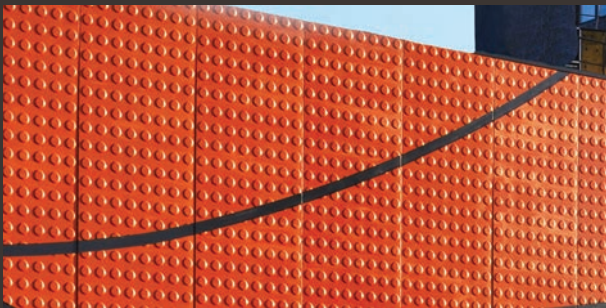
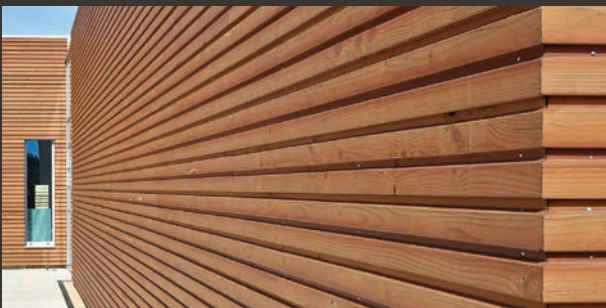


# COSMETIC SOLUTIONS FOR ARCHITECTURAL BUILDINGS





# Beautify and protect building materials



**Y**ou have nurtured your project all the way to fruition. You designed it to stand the test of time and make its mark on the history of architecture.

But if left unprotected it will be an ideal target for natural and human abuse. It deserves an exceptional finish that will enhance it and preserve its beauty down the years. To meet this requirement we have developed many innovative, high-performance products that are the best preventive solution to material deterioration. Like cosmetics for buildings, our products provide long-term protection from the assaults of the weather, and the problems of dirt, pollution, graffiti, etc. In addition to needing protection, certain projects also offer the possibility of coloration, either to make the tint uniform or to decorate the material. We have therefore developed special formulations that combine protective properties with inorganic pigments for tinted coloration of materials.

## **Guard Industrie in a few key points:**

- › 25 years' expertise in cosmetics for materials
- › committed to the environment
- › environmental leadership (12 patents)
- › two manufacturing sites in France
- › five subsidiaries around the world
- › a presence in 60 countries
- › effective, innovative products guaranteed for 10 years



GUARD INDUSTRIE  
RESPECTE L'HOMME  
ET LA NATURE

GUARD INDUSTRIE  
RESPECTS PEOPLE  
AND NATURE

# Environment

Constructing a building has impacts on the environment. The products used in its construction, maintenance or cleaning are still too often environmentally aggressive. From our beginnings we have always been committed to sustainable development. Our products are developed to rigorous specifications in terms of environmental friendliness and are water-based, contain no petroleum-based solvents and have very low levels of VOCs.

We are keen to spread awareness among industry professionals and therefore attach great importance to developing, promoting and distributing green technologies.

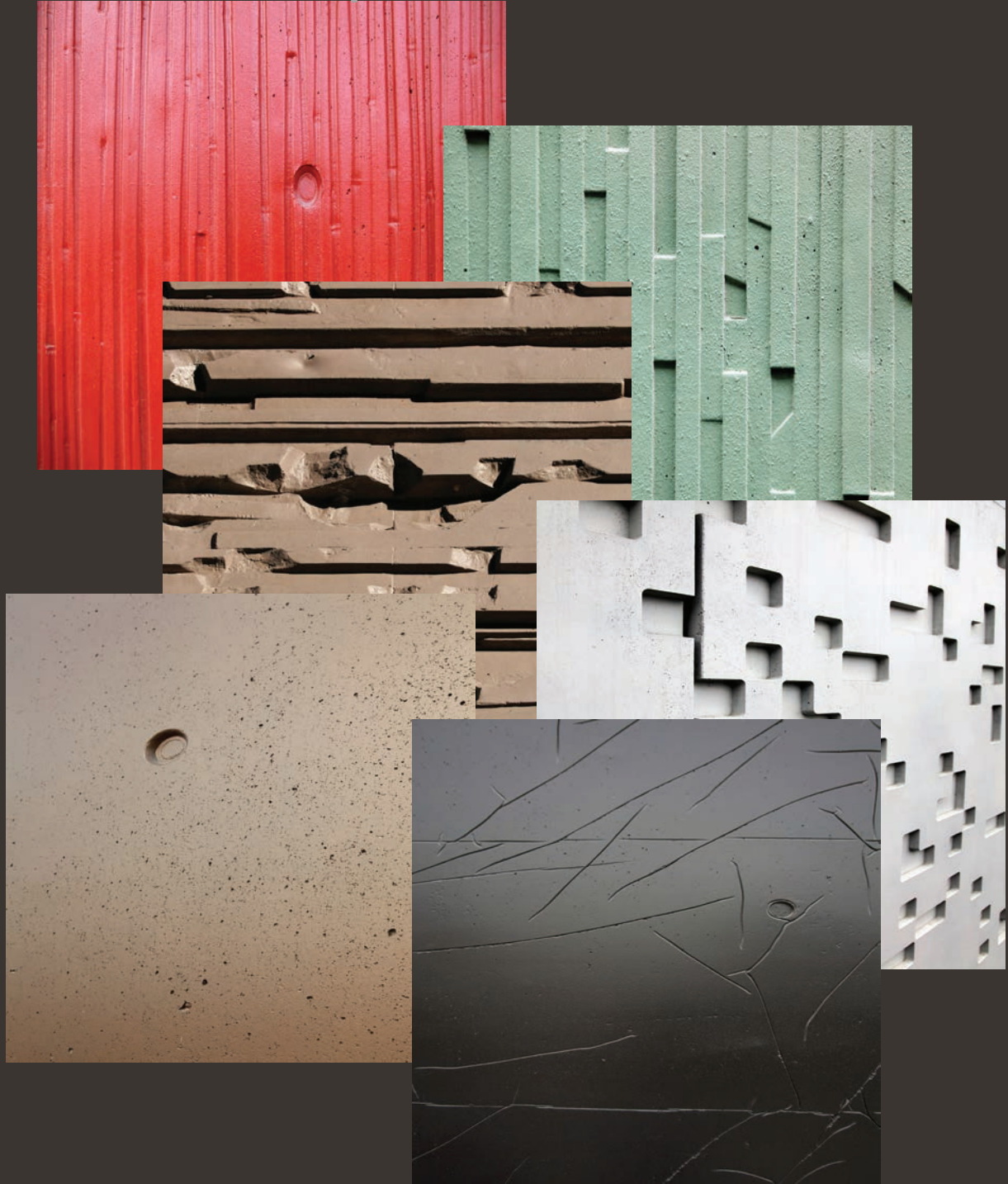
Guard Industrie is a member of Club Ademe International. ProtectGuard® was 2008 winner of "Eco Trophées 93" in the eco-product category. ProtectGuard® generates less impact on the environment than another product throughout its life-cycle, while maintaining its performance during use. Guard Remover® Eco efflorescence & Cement was the 2012 winner of the Trophée de l'i.d. Elected best product for efficacy and low environmental impact from a selection of cleaning products sold on the market.





Range of coloured protection stains for concrete.

# Embellish and protect concrete



**PROTECTGUARD®****C O L O R**

## **Gives a new aesthetic dimension to your projects**

At Guard Industry we have drawn on our expertise in aesthetics and concrete protection to develop the ideal solution for enhancing concrete. ProtectGuard® Color products colour the concrete's skin whilst at the same time retaining the mineral look of the treated surface. Not only do these products give colour, they also protect against water, oil and even graffiti to preserve the beauty of the structure.



**Protects against water, stains and pollution**



**Colours, unifies and embellishes concrete without detracting from its mineral quality**



**A range of 50 colours and 3 levels of opacity**



## Lasting protection

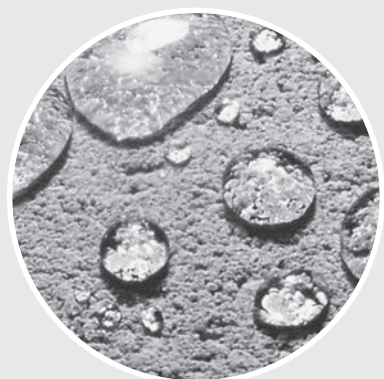
As well as colour, concrete very often requires long-term protection against the main causes of deterioration. ProtectGuard® Color stains are two-in-one penetrating stains that also protect from water, oil and even graffiti. Treated structures become impermeable and repel water. ProtectGuard® Color stains thus limit the harmful effects of moisture (erosion, efflorescence or surface salts, micro-organisms,

freeze-thaw cycles etc.) They also stop greasy stains penetrating and retard the return of grime. Treated structures become more resistant to atmospheric pollution and are easier to maintain.

- **Preserves concrete's mineral character**
- **Allows the substrate to breathe**
- **Protects against water and oil**
- **Protects against stains and pollution**
- **Anti-graffiti properties**

The two-component version of ProtectGuard® Color stain has permanent anti-graffiti properties that prevent in-depth penetration of paint pigments, making removal of graffiti tags much easier.

Beading effect on concrete  
protected by ProtectGuard® Color





Social and cultural centre, Garges-les-Gonesses

Architect: Durand Ménéard Thibault

- ProtectGuard® Color, Red Wall / Applied by: PSS Interservice



Cultural Centre, Stains / Architect: Gaëtan Le Penhuel Architectes

- ProtectGuard® Color Two Component, Basic White and Walnut  
Applied by: PSS Interservice



Photo © Benoît Fougeirol

Housing, Boulogne Billancourt / Architect: cabinet ECDM

- ProtectGuard® Color Two Component, custom-made colour (RAL 7047) / Applied by: DSA



Homes for workers, Villeparisis  
 Architect: Gaëtan Le Penhuel Architectes  
 • ProtectGuard® Color, Basic White 50%  
 Applied by: PSS Interservice



BETSINOR head office, Courrières  
 Architect: Agence A  
 • ProtectGuard® Color, custom-made colour 100% (RAL 7015-9003)  
 Applied by: SEB



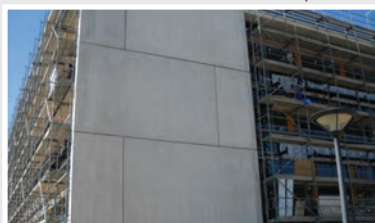
Théâtre la Piscine, Chatenay Malabry / Architecte: Nicolas Michelin & Associés  
 • ProtectGuard® Color Bi-composant / Applicateur: PSS Interservice  
 La Piscine Theatre, Chatenay Malabry / Architect: Nicolas Michelin & Associés  
 • ProtectGuard® Color Two Component / Applied by: PSS Interservice

TECHNOLOGIE  
BREVETÉEPATENTED  
TECHNOLOGY

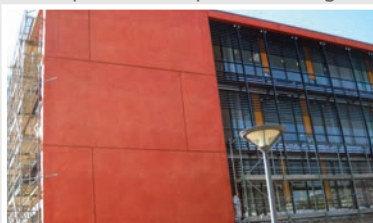
PROTECTGUARD®

C O L O R

Opt for a finish that corresponds exactly to your expectations. ProtectGuard® Color stains allow you to personalise both the colour and the finish of the colour. The extremely wide range of choices makes it possible to obtain a unique and infinitely customisable finish. The ProtectGuard® Color colour chart includes 42 standard colours and 8 "special" colours (pearl black, pearl white, gold, silver, aluminium, bronze, red



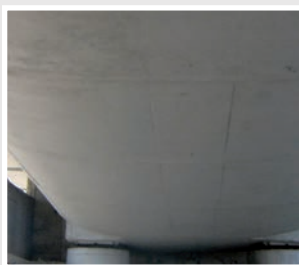
Without changing concrete's inorganic character, ProtectGuard® Color adds to the creativity.



terracotta and iridescent). Depending on the particular requirements of the client or site, Guard Industrie produces custom-made colours. ProtectGuard® Color stains are available in matt, gloss and semigloss finishes.



## Custom colors and finishes



ProtectGuard® Color is used to correct and standardize the appearance of surfaces.

### See through to the concrete

ProtectGuard® Color stains are semi-transparent. Unlike a paint, they do not hide the concrete but enhance it by allowing its surface and its stone-like characteristics to be seen. This means that the final colour of a treated concrete is the result of the stain colour on top of the colour of the concrete. Depending on the use (embellishment or colorimetric correction) and the desired finish, it is therefore possible to modify the opacity.

ProtectGuard® Color stains can be modified to give different opacities. A standard colour possesses an opacity index of 100%. Guard Industrie is able to adjust these colours and offer a greater or lesser degree of opacity without altering the performance. A colour with a low opacity index will have less covering power, in which case the initial colour of the substrate will have a greater interaction with the final colour.

Bertran de Born swimming  
pool, Périgueux  
Architect: BVL Architecture  
ProtectGuard® Color,  
custom-made colour  
"broken white",  
opacity 120%  
Applied by: BETSINOR





Child care centre, Gauchy  
Architect: Béal & Blanckaert  
• ProtectGuard® Color  
Applied by: BETSINOR



Mahatma Mandir Convention Centre, Gandhi Nagar (India)  
• ProtectGuard® Color, Gris special V2 (opacity 10%) / Applied by: Killick Guard



Housing, Zurich, Switzerland  
Architect: Wild Bär Heule Zürich  
• ProtectGuard® Color  
Applied by: PSS Interservice





Child Care Centre, Clichy-sous-bois / Architect: Gaëtan Le Penhuel Architectes  
• ProtectGuard® Color, Basic White 50% / Applied by: PSS Interservice



# Play of light for the façade of the LaM



In 2010 the LaM (Lille Métropole Museum of Modern Art, Contemporary Art and Outsider Art) opened its doors again to reveal its new face: a bold building wrapped in a hairnet of ultra-high performance fibre-reinforced concrete. To protect and decorate the 2,600 m<sup>2</sup> of concrete cast walls the architect opted for ProtectGuard® Color, choosing a Pearlescent White finish to give the concrete iridescent reflections that shift with the light. Thus, depending on the play of the light and the angle of view, the walls of the building throw back the light in subtly varying hues, sometimes purple, sometimes green, towards the visitor's

**EXAM** – Lille Métropole Museum of Modern Art and Outsider Art, Villeneuve d'Ascq.

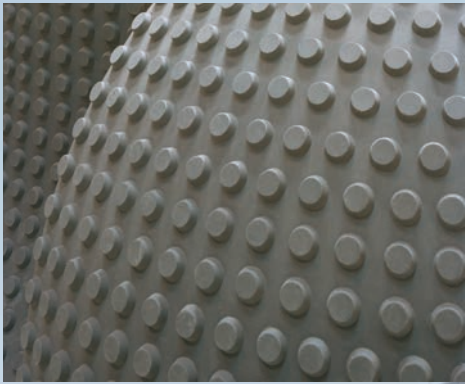
Architect: Manuelle Gautrand

ProtectGuard® Color, Pearlescent White

Applied by: ALTROTECH



# A studded building for Paris regional public transport



ECDM agency was asked by the RATP, the body that runs public transport for the Paris region, to design a new centre for bus drivers and the office team. Located in Thiais, this imposing monolithic building is completely covered in studded Ductal®. To equalise the colour across the 2,450 m<sup>2</sup> of panels, ECDM chose ProtectGuard® Color Two Component - Anthracite.

Office building for RATP bus centre, Thiais  
Architect: ECDM

- ProtectGuard® Color Two Component, Anthracite  
Applied by: SOCATEB





# Brown bark in the West Seine business district

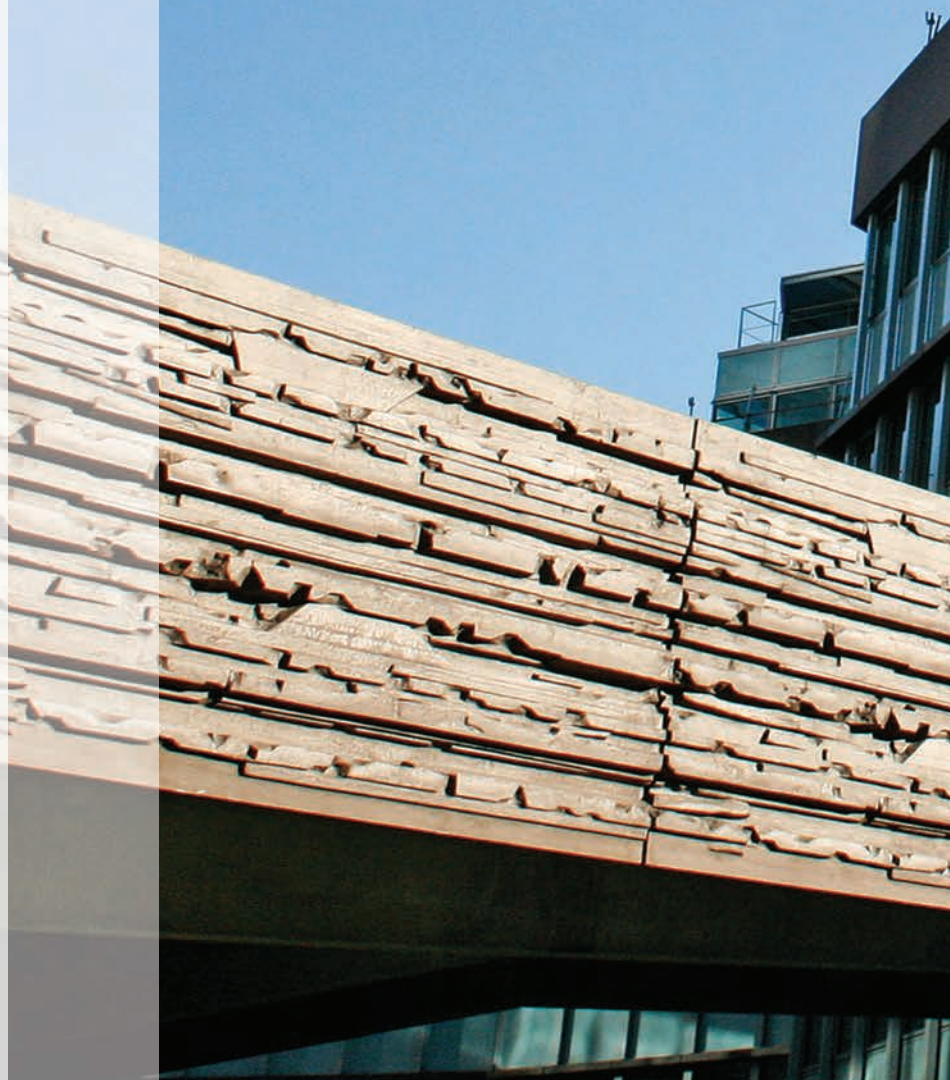


Designed by Christian de Portzamparc, the Dueo building is located in the new Seine West business district and marks the entry to the town of Issy-les-Moulineaux from Paris. The curvilinear building is covered with a brown double skin of glassfibre-reinforced concrete with random motifs that contrast with the surrounding buildings. When the coloured-in-the-mass panels left the factory there were glaring colour discrepancies between them. To give the 3000 m<sup>2</sup> of GRC panels a uniform, more intense colour the architect chose ProtectGuard® Color - Walnut.

Dueo Building, Issy-les-Moulineaux.

Architect: Christian de Portzamparc

- ProtectGuard® Color, Walnut 100%
- Applied by: ALTROTECH







PROTECTGUARD®

COLOR

BI-COMPOSANT

PROTECTGUARD®

COLOR

TWO COMPONENT

CONCRETE STAINS

## for a Paris nursery

## Baby-skin effect

Budin nursery in the 18th arrondissement of Paris surprises the passer-by with an undulating façade that ripples in the light. Designed by ECDM, the building is made up of 68 prefabricated titanium white Ductal® panels. To tint and protect the building, the architect chose to use ProtectGuard® Color Two Component – Basic White at 100% opacity for an immaculate white look. The extra shine of a gloss finish was chosen to make the facade as smooth as a baby's skin and capture as much luminosity as possible.

Nursery, rue Pierre Budin, Paris Architect:  
ECDM (E. Combarel, D. Marrec)

- ProtectGuard® Color Two Component,  
Basic White 100% / Applied by: PSS Interservice



# A basketball finish for the Euronantes VEO building

Situated in the heart of the new Euronantes district, the highly creative architecture of the VEO complex takes the form of two office blocks connected at ground level by a gymnasium whose hammered façade evokes the outer skin of a basketball.

For the finish of this bold project Guard Industrie was commissioned to custom-make an orange shade exactly recreating the colour of a basketball, giving the whole building an athletic feel. To contrast with the basketball, the facades of the towers were treated with ProtectGuard® Color Two Component – Anthracite (gloss finish, 100% opacity).

Mixed office and gymnasium complex, Nantes  
Architect: ECDM (E. Combarel, D. Marrec)

- ProtectGuard® Color Two Component, custom-made colour "orange" + Anthracite (gloss finish), 100% opacity
- Applied by: CHP



# White cast wall for Tianjin port

Initially designed for trade, in 2010 the port of Tianjin opened a new terminal exclusively for cruise ships and transport of people. Designed by China Construction Design International, the whole of the 43,000 m<sup>2</sup> terminal is covered with GFRC (glassfibre-reinforced concrete) panels symbolising white sails filled by the breeze. On leaving the factory, these prefabricated panels had colour defects which were equalised by the application of ProtectGuard® Color – Basic White

Terminal of Tianjin port, China  
Architect: China Construction Design International  
• ProtectGuard® Color, Basic White  
Applied by: Guard Bao Te Jia



# Personal support for your project

Your project is unique and has requirements that no other project has. To handle these demands, our teams follow you from the selection of the products to their application.

Depending on your requirements, we offer the most appropriate solutions for your materials and we tailor our products in terms of colour (standard, custom, colour-matched etc.), opacity and finish. We support you on site through our network of application specialists. These professionals are trained in the use of our products and know how to apply them correctly. We have also formed partnerships with the big prefabricators for direct in-factory application.

This professional network enables us to respond quickly and flexibly to your requirements, whatever they may be.

Guard Industrie is a Training Body (registered number 11930499593) and we can therefore train your normal tradesmen in how to apply our products at our training centre in France or directly on site in the case of foreign projects.

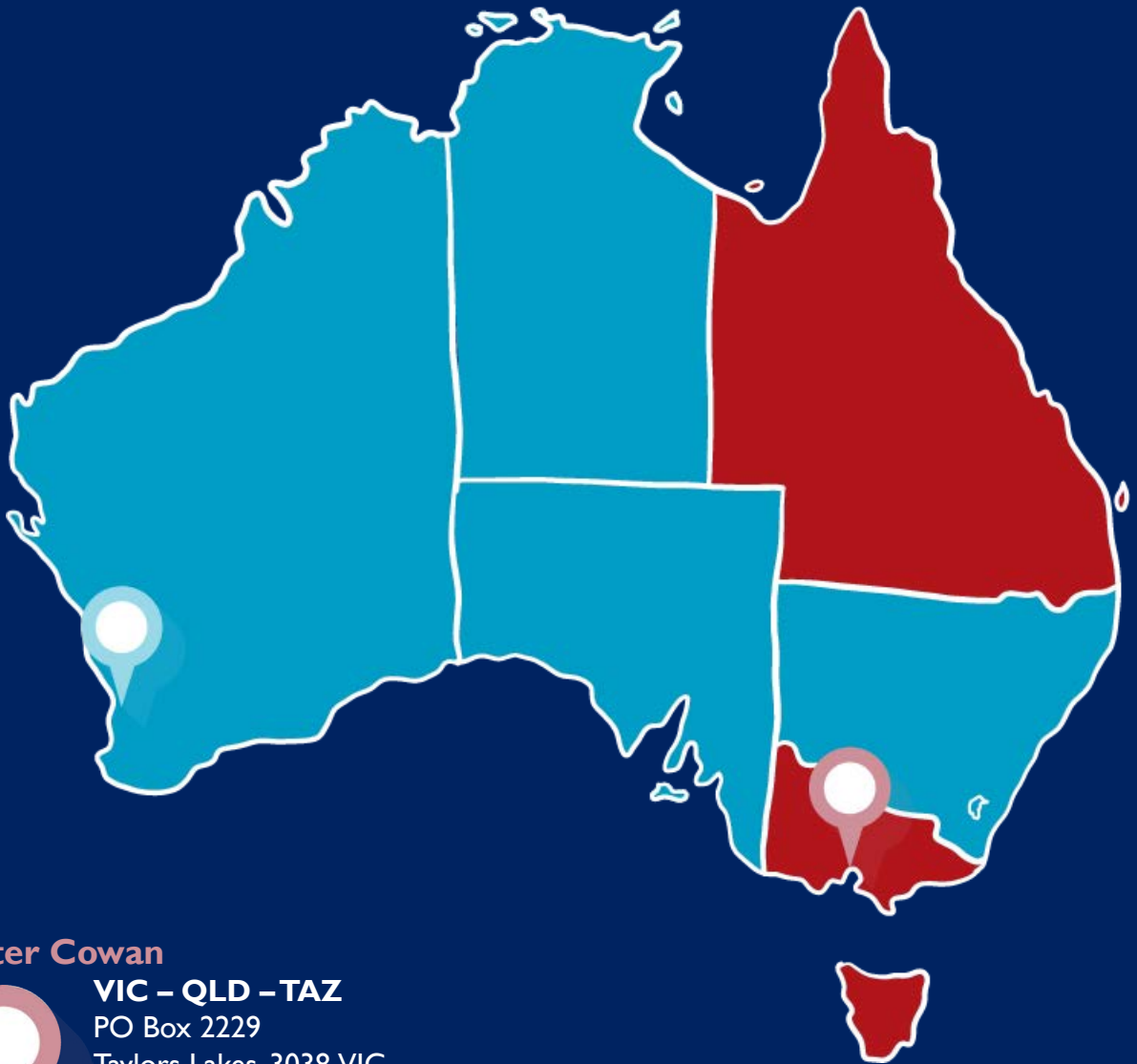


**Contact us to discuss your project's requirements.**

For all information, call us on 0415 140 371

or email us at [SalesandSupport@GuardOz.com.au](mailto:SalesandSupport@GuardOz.com.au)





**Peter Cowan**



**VIC – QLD – TAZ**

PO Box 2229

Taylors Lakes, 3038, VIC

0488 684 848

Peter@GuardIndustry.com.au

www.GuardIndustry.com.au

**Johnny Mc Cann**



**WA – NSW – ACT – NT – SA**

PO Box 3890

Success, 6964, WA

0415 140 371

Johnny.McCann@GuardOz.com.au

www.GuardOz.com.au

